

**Animals give
you a better
life...You can
leave them a
better world**



**How to include a gift to
RSPCA Queensland in your Will**



RSPCA Queensland Chair Justine Hickey

The love you have for animals can live on forever

For those of us lucky enough to have animals in our lives, we are truly blessed. Our treasured pets are much more than our companions, they are our family. Our pets give us so much love and comfort and they fill our homes with joy.

We share our lives with animals in many different ways. Whether you own a dog that relies on you for walks, a cat that loves the warmth of your lap, or whether you are visited by a possum that frequents your backyard, each and every one of us has a responsibility towards animals in some way, and we must all work together to protect them.

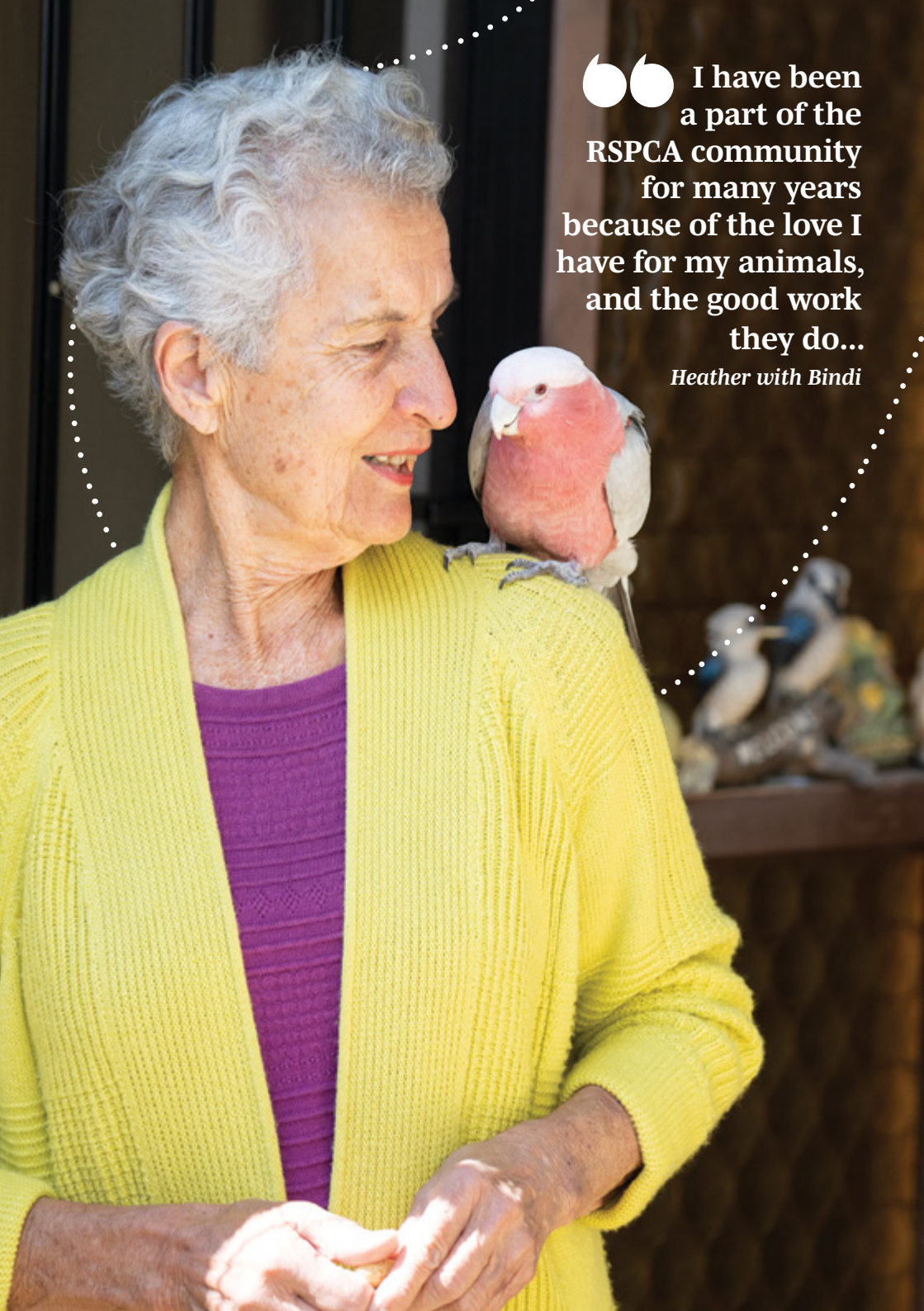
The love you feel for your pets is like no other love. They bring you unconditional love, companionship and a sense of purpose above and beyond yourself.

Thankfully, there is a meaningful way that your love can live on. In fact, if the love you feel for the animals in your own life has flourished into a tenderness for all animals, then you can help to make the world a better, kinder and happier place for them all.

A bequest or a gift in your Will is one of the most enduring gifts you can leave behind. It means your generosity lives on and helps RSPCA meet the future needs of vulnerable animals in their care.

I am leaving a bequest in my Will to ensure that RSPCA Queensland can continue to make a difference in the world long after I am gone...

Justine Hickey, Chair of RSPCA Queensland Board



“ I have been a part of the RSPCA community for many years because of the love I have for my animals, and the good work they do...

Heather with Bindi

Heather's legacy

Heather adored animals her whole life and devoted countless hours as an RSPCA shelter volunteer as well as a foster carer. When Heather passed away she very kindly left a bequest to RSPCA Queensland in her Will. It was her wish that her support for the Foster Centre at Wacol would continue well into the future.

As a dedicated volunteer for over 30 years, Heather saw firsthand the good work that was being done at RSPCA Queensland and how donations directly helped the animals in their care.


Heather fostered a cat named Cliquot from RSPCA Queensland. The cat had been bought into the vet hospital after being hit by a car. Heather cared for him for six weeks while he recovered from surgery and his leg healed. *"I fell in love with him of course!"* said Heather. *"When he was better he couldn't possibly go to another home - he had to stay with me".*

"I am passionate about the work of all of the RSPCA teams but the Vet team really go above and beyond for every animal that comes through their doors. They ensure that no animal falls through the cracks and they get the veterinary care and love that they need".

"I know that after I am gone, many animals will benefit from my legacy. I couldn't imagine a better way to celebrate my love for animals after I am no longer here to care for them".

Heather's legacy lives on at the RSPCA Queensland. A sign has been displayed in her memory so that she will never be forgotten and others will be inspired by her kindness to animals.





The story of Monty and his home ever after

This is beautiful Monty who has just celebrated his 20th birthday.

Twenty years ago, Monty was found by Judy, a devoted animal lover, in a dirty old shed on a property just outside Brisbane. He was a newborn kitten and his frail mum had taken shelter in the shed to give birth. Judy gathered up the mum and kittens and took them home to care for them. Judy provided a loving home to the mother cat, Charlotte, and two of the kittens Monty and Meg. Judy's friends very happily adopted the other kittens.

"So, my little family of three, lived their lives with me," said Judy. "My beautiful mother cat, Charlotte, and Meg, both almost reached 20 years of age and now Monty is the 'last man standing'."

Recently Judy had a lengthy stay in hospital and, with ongoing serious health issues, she sadly came to the realisation that she would not be able to look after Monty when she returned home. So the appropriate steps were taken to rehome Monty under the RSPCA Queensland Home Ever After program.

The search for Monty's new home

Leslie lost her beloved cat (a 15 year old boy) back in February to an aggressive cancer. After many months of grieving, Leslie started to realise that the house felt very empty without a furry companion.

"When I saw Monty, I knew right away that, as a senior boy, he would be absolutely perfect for me. Monty has settled in well and still has lots of love to give. I enjoy having him curl up on my lap every chance he gets. I don't see myself as Monty's new owner. Monty's original owner will always have that

title. I see myself as Monty's trusted guardian for this final chapter of his life and look forward to making sure it is the best chapter ever," said Leslie.

Home Ever After

Once you register your pet/s with Home Ever After, you can have peace of mind knowing that they will be cared for by RSPCA Queensland in an emergency or found a new loving home if you can no longer care for them.

Home Ever After operates 24 hours a day and is funded by donations. This program is offered to people who leave a gift in their Will to RSPCA Queensland.

If you would like to find out more please phone 07 3258 5645 or email wills@rspcaql.org.au

HOME EVER AFTER

How to include a gift to RSPCA Queensland in your Will

Your Will is one of the most important documents you will sign during your life, yet many people haven't updated or changed it for years.

This practical guide can help you take the thoughtful step to include a gift to RSPCA Queensland in your Will, whether you are doing a Will for the first time or updating an existing Will.

If you do go ahead and include RSPCA Queensland in your Will, we would appreciate you letting us know so we can thank you for helping put an end to animal cruelty and leaving animals a better world.

Suggested wording for your Will

Your solicitor may find it useful to refer to our suggested wording when updating your Will. Simply ask your solicitor to insert the appropriate clause selected from the wording below:

"I give free of all duties or taxes... [Please insert here the appropriate statement selected from the six options below:]

1. the whole of my estate
2. [insert number] percent of my estate
3. the residue of my estate
4. [insert number] percent of the residue of my estate
5. the sum of \$ [insert value of your gift]
6. [insert number] of my [insert name of shares] shares.

...to The Royal Society for the Prevention of Cruelty to Animals Queensland Limited (ABN 74 851 544 037) of 139 Wacol Station Road, Wacol Queensland 4076 for its general purposes. I declare the receipt of the RSPCA will be sufficient discharge for my Trustees."

Some things to remember when writing or updating your Will

List the assets you have to gift in your Estate

Listing what you own gives you an idea of the total value of what you will be leaving behind (your Estate), which you will be able to share amongst the people and causes you care about.

Remember your pets by adding this Home Ever After clause to your Will

I DIRECT that the Royal Society for the Prevention of Cruelty to Animals Queensland Limited (ABN 74 851 544 037) of 139 Wacol Station Road, Wacol, Queensland 4076 shall care for any animals or pets which I own at the date of my death until such time as a suitable home in the discretion of the said Society shall be found for such animals or pets.

Decide how you want to divide your estate

Decide what you would like to leave to each of the people and charities on your list.

Seek legal advice from a solicitor



You can find a local solicitor on the Queensland Law Society website using this QR code or search www.qls.com.au/find-a-solicitor/search or call 1300 367 757



The Public Trustee of Queensland offers a free Will writing service. You can contact them using this QR code or search www.pt.qld.gov.au/wills/making-a-will-step-by-step/ or call 1300 360 044

Reflect any major life changes in your Will

Whenever there is a significant change in your life (birth, death in the family, divorce, marriage, change in financial circumstances), you should think about updating or revising your Will to reflect that.

Please remember:

- To discuss important aspects about your Will with your Executor to ensure that your wishes are fulfilled in the way you would like.
- To make sure your Will is kept in a secure place, that it is easy to find and that your Executor knows where it is located.
- To update your Will, should your circumstances change in the future. It's easier than you think.

If you would like to get in touch with our Philanthropy Team please contact them on 07 3258 5645 or wills@rspcaqld.org.au

We honour all those who leave a gift in their Will on our Remembrance Wall at our Animal Care Centre in Brisbane.

RSPCA Queensland



Peace of mind for the future care of your precious pets

Your pets are an important part of your family. As fellow animal lovers we take our responsibility to them, and to you very seriously. If you register your pets in our Home Ever After, we promise to:

We will look after your pets in the event of your passing, or if you are no longer able to care for them

They will not be left alone. We will support them in accordance with your final wishes, providing them with love and care until they are ready to become a part of their carefully selected new family.

As experts in animal adoption and rehoming, we know how to match animals and people, and we know how to assess adopters too. We have a team of adoption experts and animal behaviourists dedicated to selecting loving, caring, responsible adopters.

We will care for your pets if you are rushed to hospital

Should there be an emergency situation, such as you being rushed to hospital, when there is no-one to look after your pets, then we will care for them during that time.

Home Ever After will always be free

All we ask is that you include a gift to RSPCA Queensland in your Will to help us continue rescuing and rehoming animals, putting an end to suffering, cruelty and neglect.

Step 1: Order your registration pack

Fill out the form on the back of this brochure and post it back to us. Alternatively, complete the form on our Home

Ever After page rspcaqld.org.au/wills. We will then mail you a pack with registration forms for you to complete for each of your pets.

Step 2: Register your pet or pets

You will need to fill out a separate registration form for each of your pets and one all about yourself. By completing these forms you are providing us with detailed information on your pet's requirements, medications, personality, and preferences. Everything from their favourite foods to how they like to be cuddled. This information helps us to care for them and find them a new home when the time comes.

Step 3: Add Home Ever After instructions to your Will

It's essential to leave instructions in your Will, because it is a legal document that gives force to your final wishes regarding the future care of your pets. The wording to insert into your Will, is located on the previous page of this brochure and will express your wish for RSPCA Queensland to care for and rehome your pets in the event of your death. We'll need a copy of these instructions in your Will to complete your pet's registration.

Step 4: Include a gift in your Will to RSPCA Queensland

We ask that you include a gift in your Will to RSPCA Queensland so that your love of animals lives on.

Taking this step is also a meaningful way for you to leave the world a kinder and safer place for all animals especially those that are homeless and suffering.

Step 5: Your safety net is in place

Your precious pets are protected by Home Ever After, and plans for their future care and happiness are in place. The peace of mind that this will bring is priceless.



Frequently asked questions:

How will my pets get to the RSPCA after I'm gone?

In accordance with instruction left in your Will, a friend, a neighbour, a member of your family or your solicitor, can bring your pet to your nearest RSPCA Animal Care Centre or make arrangements for our rescue team to gain access to your home to collect your pets.

Can you rehome my pets together?

Where a family of pets are clearly bonded, we will do our utmost to rehome them together.

What happens to my pet if I become unwell, sick or injured?

Should anything temporarily prevent you from looking after your pet for example whilst you are in hospital, and you don't have people you trust to care for your pet in the short-term, then RSPCA Queensland can provide temporary boarding for them during that time. When you register in the Home Ever After Program you will be provided with a 24 hour emergency phone number to call.

Why do I need to include wording in my Will?

No one knows your pets like you do, If you want them to be cared for and rehomed by the RSPCA Queensland, then clear instructions in your Will ensure that your final wishes are carried out. We'll also need a copy of your Will for our records.

Will you keep in touch with the adopting family?

Yes. In the months following their adoption, we keep in touch with your pet's new family to make sure your pet is happy in their forever home. We can also offer on-going support to your pet's new family to help them all settle in together.

Are there any pets you won't register?

While Home Ever After is primarily designed for cats and dogs, we do rehome other pets as well, such as birds, reptiles, pocket pets and farm animals.



“ I am leaving a bequest to RSPCA Queensland because I hate the idea of cruelty to animals and I know no other group that does the breadth of work that RSPCA Queensland undertakes to protect animals...

Cynthia with Pumpkin



Please join us at a **Supporter Morning Tea**

RSPCA Queensland hosts supporter morning tea events throughout the year. These events are held at RSPCA Animal Shelters, RSPCA Adoption Centres and in community halls and clubs all around Queensland.

These events are very friendly and informal and all our supporters are encouraged to attend and to bring a friend with them.

Guests will hear how their support has helped to rescue, rehabilitate and rehome animals in their local community. They will also have the opportunity to meet with their local RSPCA Inspector who will share experiences and inspiring stories from the region.

These events are a chance to learn more about RSPCA Queensland and for our team to meet supporters and showcase the wonderful work that they are helping us achieve.

You can find out when an event will be held in your local area by emailing supporterday@rspcaql.org.au or by phoning 07 3258 5645.



Inspector Darryl speaks with a guest at a Supporter morning tea.



“ We always enjoy attending the annual RSPCA morning tea with the local team from Bundaberg and meeting like-minded supporters. It is good to get a hands-on picture of the important work they are doing with vulnerable animals in our community...*Peter & Geraldine*

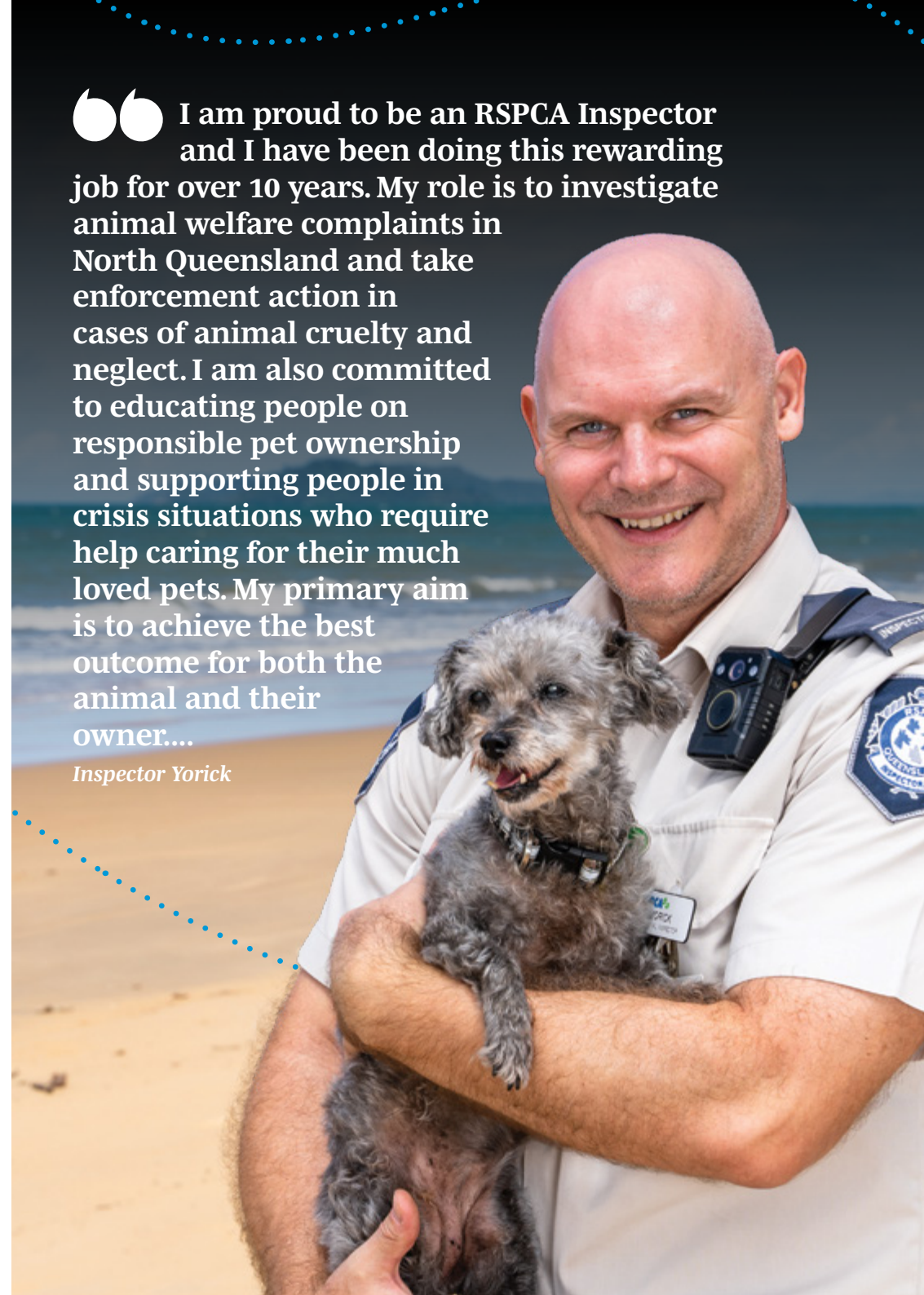
A heartfelt thank you to everyone who supports us.

Every year approximately 45,000 animals are rescued, rehabilitated and rehomed by RSPCA Queensland. Without the dedicated support of our donors, RSPCA Queensland would not be able to continue providing the following programs and services:

- **nine animal care shelters** throughout Queensland (caring for approximately 1,000 animals every week)
- **Animal cruelty complaints:** we have 28 Animal Inspectors working tirelessly across Queensland investigating animal welfare complaints and enforcing the Queensland Animal Care and Protection Act 2001
- **two 24 hour** Veterinary Hospitals
- **two Wildlife** Hospitals
- **a fleet of 12** animal ambulances
- **a 24 hour emergency** call centre for reports relating to animal welfare (we receive approximately 20,000 calls per year)
- **Op Shops** throughout Queensland that are staffed by volunteers, stocked by donated items and raise much-needed funds
- **an extensive school education** program called "AWARE" that is a curriculum based program teaching responsible pet ownership to children
- **an extensive home based** foster program for animals and wildlife
- **a School for Pets** which includes weekly dog and puppy training
- **shop with purpose** RSPCA World for Pets and Op Shop stores provide vital funding to support the animals in our care.
- **volunteering** over 2,000 volunteers work tirelessly behind the scenes at the RSPCA to keep our doors open to animals in need
- **community support** our Community Outreach team provide essential pet care services like pet food, vaccinations, vet checks and more to owners most in need; helping to keep people and pets together

“ I am proud to be an RSPCA Inspector and I have been doing this rewarding job for over 10 years. My role is to investigate animal welfare complaints in North Queensland and take enforcement action in cases of animal cruelty and neglect. I am also committed to educating people on responsible pet ownership and supporting people in crisis situations who require help caring for their much loved pets. My primary aim is to achieve the best outcome for both the animal and their owner...

Inspector Yorick



“ It makes me very happy to know that I am helping animals. The need is great and I have seen firsthand how hard the staff and volunteers at RSPCA Queensland work and I want to be part of the solution...*Michele*



The animals that share our days, enrich our lives in so many ways.



**Animals have given you a better life.
*Thank you for leaving them a better world.***

🏠 RSPCA Queensland, 139 Wacol Station Road, Wacol 4076.

☎ 07 3258 5645 ✉ wills@rspcaqlld.org.au

ABN 74 851 544 037

